

RE • SOURCE

A Bimonthly Publication of the Bay Area NRC

July 2006



OUR VISION:

The creation of a San Francisco Bay Area nursing community with dramatically improved quality of nursing education, leading to measurable improvements in patient care.

Previous newsletters and other information is available on our website:
<http://www.BayAreaNRC.org>

CONTACT INFORMATION

Customer Support
help@BayAreaNRC.org
866-325-3222 x123

General Information
bepperly@BayAreaNRC.org

Community Outreach
kt@BayAreaNRC.org
nwest@BayAreaNRC.org

SIMULATION GRANT APPROVED

Due to the hard work of the Bay Area Simulation Collaborative and everyone within the Bay Area nursing community, we are pleased to announce that the multi-million dollar grant to develop and implement five Regional Simulation Centers in the Bay Area has been awarded!

The Gordon and Betty Moore Foundation awarded this grant to the Foundation for California Community Colleges (FCCC) and the California Institute for Nursing & Health Care (CINHC) as the third component of the shared services initiative under the Nursing Resource Center. The development of regional, shared simulation centers is an exciting endeavor that will benefit the nursing community and the quality of patient care overall. A formal press release was issued by FCCC on July 10th and may be viewed on our website under the Library.

Work will begin with a six month planning phase that will include a formal meeting with the Operating Committee this summer. We are still looking for a member to co-chair this important committee along with Colleen O'Leary-Kelley, Ph.D., RN, Associate Professor at San Jose State University. If you are interested in chairing, contact KT Waxman.

The FCCC and the CINHC look forward to working with everyone to continue to increase educational capacity and enhance the way we teach nursing students and nurses in the Bay Area.



The Bay Area NRC is a collaborative effort between the Foundation for California Community Colleges (FCCC) and the California Institute for Nursing & Health Care (CINHC).

Thanks to the Gordon and Betty Moore Foundation for their financial support of this project.

c i n h c



HIGHLIGHTS

CCPS Participants

Schools = 42

Hospitals = 63

* * *

User Survey

Responses = 53

Overall ratings:

Schools ... 3.8

Hospitals ... 3.9

* * *

Focus Groups

Participants = 9

5 schools

4 hospitals

CCPS Participants

Quick lists of schools and hospitals using CCPS in the Bay Area are available on the CCPS home page

* * *

CCPS Home Page:

ccps.foundationccc.org

MEASURING OURSELVES

User Survey

Following the last planning cycle, which covered the Fall 2006 placements, we distributed a survey to determine current user satisfaction and progress made since the previous placement cycle. We received over 50 responses, from 20 schools and 30 hospitals, which represented 50% of our total user base.

Using a 5 point scale (5 meaning strongly agree and 1 meaning strongly disagree), school respondents gave the CCPS an overall rating of 3.8 and hospitals rated it a 3.9. Additional category results are detailed on page 4 of this newsletter.

This survey indicated a moderate improvement from the previous cycle (the December 2005 survey yielded an overall rating of 2.7 by schools and 3.3 by hospitals). We continue to strive for a higher level of satisfaction by increasing the user friendliness of CCPS, and continuing education and outreach activities, in order to ensure that it will ultimately be an improved process for scheduling placements.

Focus groups

In addition to the survey, we also conducted focus groups. On May 26th, Pat Lynch, the CCPS Operating Committee Chair, facilitated two sessions, one for the San Francisco/Marin area, and the other for the South Bay/East Bay regions. The sessions included both hospital and school users and concentrated on four areas:

1. Reduction of time and resources
2. Ease of use and functionality
3. Placement cycle calendaring options and suggestions
4. CCPS' ability to allow schools and hospitals to accommodate students and increase educational capacity



The individuals who participated in the focus groups provided valuable information and suggestions for both website design and outreach activities. Their concerns and recommendations were documented and are being used to guide CCPS improvements. In addition to providing feedback on CCPS, the focus group allowed hospital and school coordinators to come together, creating a forum for increased interaction and relationship-building. The focus groups were a success and we appreciate the efforts of those who participated.

We plan to continue to use both of these feedback tools following subsequent clinical placement planning cycles. The results of the survey and the focus groups were incorporated into the decisions made around upcoming enhancements as well as the future direction of CCPS. Some of these changes will be ready in time for the next planning cycle that is due to start next month (see article on page 4).

CFRC

Visit the CFRC at www.iTeachNursing.org to browse the myriad of resources available for nurses interested in teaching. Register to create your online profile and view open positions in the Bay Area.

* * *

*Nearly 70 profiles
Over 50 job postings*

“The Bay Area NRC is helping remove barriers to the current educational system. The CCPS and other innovations will make the system more efficient while it increases capacity.”

Helen Kim
Chief Program Officer,
Betty Irene Moore
Nursing Initiative
Gordon and Betty
Moore Foundation

as quoted in
Advance for Nurses
May 22, 2006

CENTRALIZED FACULTY RESOURCE CENTER

GAINING MOMENTUM

The Centralized Faculty Resource Center at www.iTeachNursing.org has been in use for just over 4 months now. In that short time, we have had over 250 users register to look at job postings for nursing faculty in the Bay Area. Nearly 70 have completed our easy online form to build their profile, which schools can use to view their qualifications and contact them directly regarding teaching opportunities.

Twenty-four schools have requested access to post jobs and over 50 jobs have been posted by 14 of them. Schools have sent over 80 emails to faculty candidates through the online method, and several have been sent in the opposite direction.

The iTeachNursing.org site has been visited by an average of 20 people each day. While the majority is in the northern California region, there have also been multiple hits across the United States and abroad.

The site is viewed by new, potential faculty each day. We urge more schools to use this valuable resource, and for registered schools to continue to post new positions. For access to post a

position, please request a username and password from our Customer Support Desk at cfrchelp@BayAreaNRC.org. For faculty candidates interested in posting an online profile, go directly to www.iTeachNursing.org and register.

MAKING HEADLINES

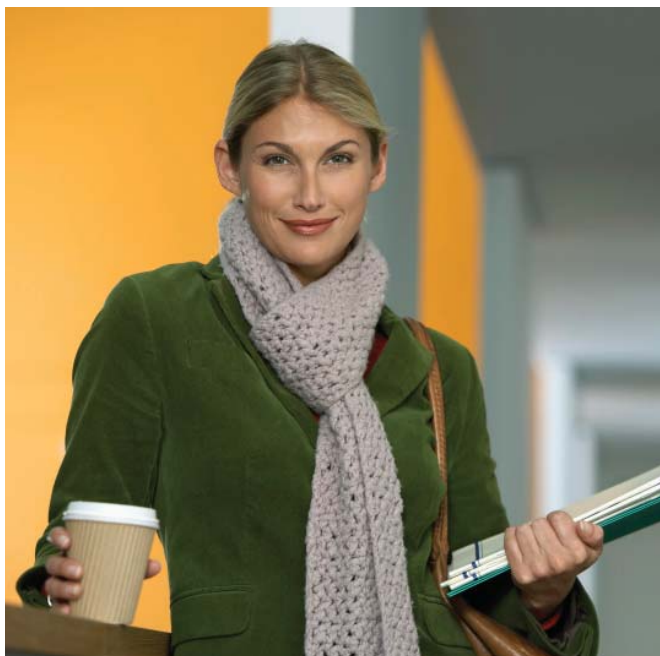
Awareness of the faculty resource center has been growing, due to the diligent efforts by the California Institute for Nursing & Health Care. In addition to multiple in-person demonstrations and discussions, the CFRC was announced in a recent press release.

Press release information and other Bay Area NRC news has also been featured in:

- *Advance for Nurses* May 22 issue (Vol 3, Issue 12, page 11 “In the Spotlight”) in the “Giving Back” article about the Betty Irene Moore Nursing Initiative of the Gordon and Betty Moore Foundation
- *Advance for Nurses* July 3 issue (Vol 3, Issue 15, page 7 in “Regional News”)
- *NurseWeek* July 3 issue, page 6 under “Area News” in an article titled “New website connects Bay Area nursing faculty”

The full text for both the CFRC press release and the May 22nd *Advance* article may be viewed on the Bay Area Nursing Resource Center website (check the Library page).

In addition to regional communication, we have also asked schools and hospitals to include information about the Centralized Faculty Resource Center in their own faculty newsletters. Please contact KT Waxman or Nikki West if you’d like assistance with wording for an article for your organization’s newsletter.



THE BAY AREA NRC



www.BayAreaNRC.org

info@BayAreaNRC.org

CCPS CONTINUED

USER SURVEY RESULTS

Survey respondents provided a rating on 10 different questions using a 5 point scale. Results for each of the questions are listed in the table below.

CATEGORY	SCHOOLS	HOSPITALS
Comfort level with the system	3.6	4.1
CCPS is easy to use	3.2	3.7
Will ultimately reduce time & resources required	3.5	3.5
Enhancements have improved usability	3.8	3.8
Will be primary tool for placements	3.4	3.7
Master calendar works well	3.8	3.8
Opened more unit/shift availability	n/a	3.0
New placements at new hospitals	2.9	n/a
Feedback is valued	3.9	4.2
Customer support	4.2	4.7

We will be surveying our users following each CCPS planning cycle to continue measuring our progress towards the objectives of the system. The next survey will use a traditional grading scale to represent the 5 points (A, B, C, D, and F).

Spring/Summer '07 Planning Cycle:

* * *

August

Hospitals update unit
availability

* * *

September 5 - 25

Schools make
placement requests

* * *

Sept. 26 - Oct. 15

Hospitals review and
respond to requests

NEXT PLANNING CYCLE

Bay Area CCPS users will begin the next planning cycle, for Spring/Summer 2007 placements, in August. A few adjustments have been made to the planning cycle approach, based on input from the community and past placement experience. There is still a "master calendar" to guide both schools and hospitals through the process, but the order and length of some components has been modified.

- » August . . . Hospitals update all unit availability
- » September 5 - 25 . . . Schools make proposals
- » Sept. 26 - Oct. 15 . . . Hospitals review and schedule placements

The hospitals will start the cycle by updating all unit availability during the month of August. Schools can modify their basic information at any time, but this step must occur before placement requests can be made.

The school portion of the planning process is combined and lengthened. School coordinators may now choose

to update their basic information and then proceed directly to the matching process if desired, rather than having to wait until a later step as they did previously. This step was also increased to 3 weeks to allow more time for making placement requests.

Finally, the hospitals will re-enter CCPS to respond to student placement requests. Hospitals are encouraged to respond earlier in September to requests that will definitely be accepted (i.e., long-standing agreements) and those that must be declined regardless of other requests (i.e., cannot take LVN students). This will improve turnaround time and feedback to schools and more accurately reflect actual availability for schools looking for new placements.

We will send announcements and reminders to our CCPS users to guide them through this process. As usual, Customer Support and Community Outreach will be available to help as well. The updated calendar and contact information is available on the CCPS home page.